



ERIKKILA

JIB CRANES

LIFTING EXCELLENCE THROUGH INNOVATION AND QUALITY

ERIKKILA JIB CRANES PROVIDE SAFE & RELIABLE LIFTING

Founded in 1912 in Vyborg, Finland, Erikkila has specialized in lifting solutions since 1976, developing the Prosystem light crane system. A pioneer in the industry, the company introduced the low headroom bridge design and patented the overload indicator for light cranes.

Headquartered and manufactured in Masala, Finland, all light cranes, jib cranes, and portal cranes are produced using European-sourced materials and adhere to strict quality standards. With 100+ partners in 40 countries, customers are supported worldwide.

Erikkila's light crane systems are designed for workstations and production lines, offering lifting capacities of up to 2,000 kg. As part of the Kito Crosby Group, the company continues to lead in safety, reliability, and innovation.





Column Jib Crane
(overbraced steel)

ERIKKILA PRODUCT RANGE

Erikkila single and double girder cranes are user-friendly workstation solutions offering wide work area coverage. Designed for effortless operation, they ensure smooth and precise load handling.

Erikkila jib cranes provide versatile and durable lifting solutions, with options for wall- or floor-mounting. Ideal for production, assembly, and maintenance, they integrate seamlessly into most facilities.

Erikkila Movable cranes offer flexibility and mobility, making them perfect for occasional maintenance tasks in areas where fixed cranes are unavailable or impractical. Easy to relocate, they provide an adaptable lifting solution across multiple workstations.



Double Girder Crane
(steel bridge & track)



Movable workstation crane

EFFICIENT AND SAFE LOAD HANDLING

Erikkila Jib Cranes support up to 1,500 kg and can be wall- or floor-mounted. They complement overhead cranes and hoist tracks while optimizing floor space. Designed for versatility, durability, and long service life, they are also easy to install, maintain, and relocate if needed.

The trolley can be manual or electrically operated, with power supplied via flat cable or internal conductor rail. An optional slewing limiter prevents rotation beyond the defined working area.

PREMIUM STEEL AND ALUMINIUM PROFILES

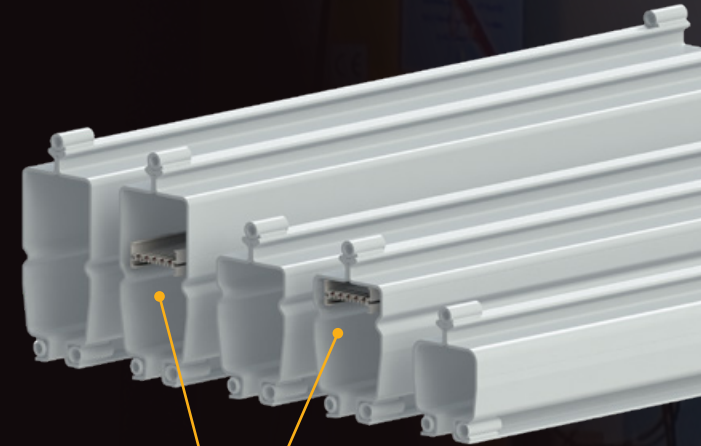
The steel profiles, available in three sizes, are made from high-tensile steel, allowing for higher stresses and load capacities while maintaining an exceptional weight-to-load ratio.

The aluminium profiles, available in four sizes, are crafted from high-quality anodized aluminium, ensuring durability and a lightweight structure.

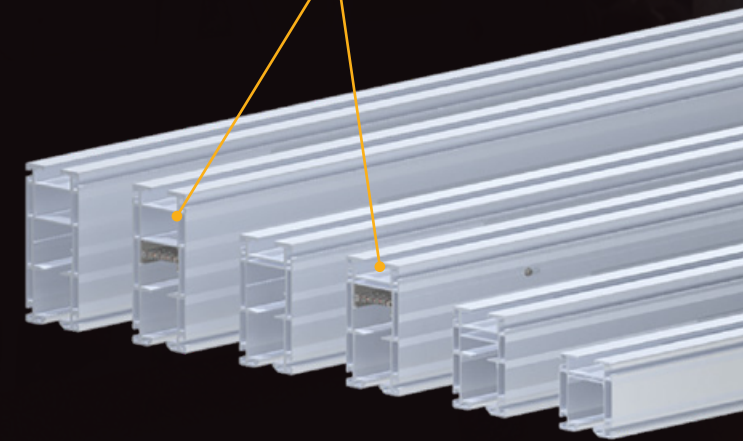
SMOOTH AND EFFICIENT TROLLEYS

Designed for steel and aluminium profiles, the trolleys operate quietly, with minimal rolling resistance, making them light and easy to move.

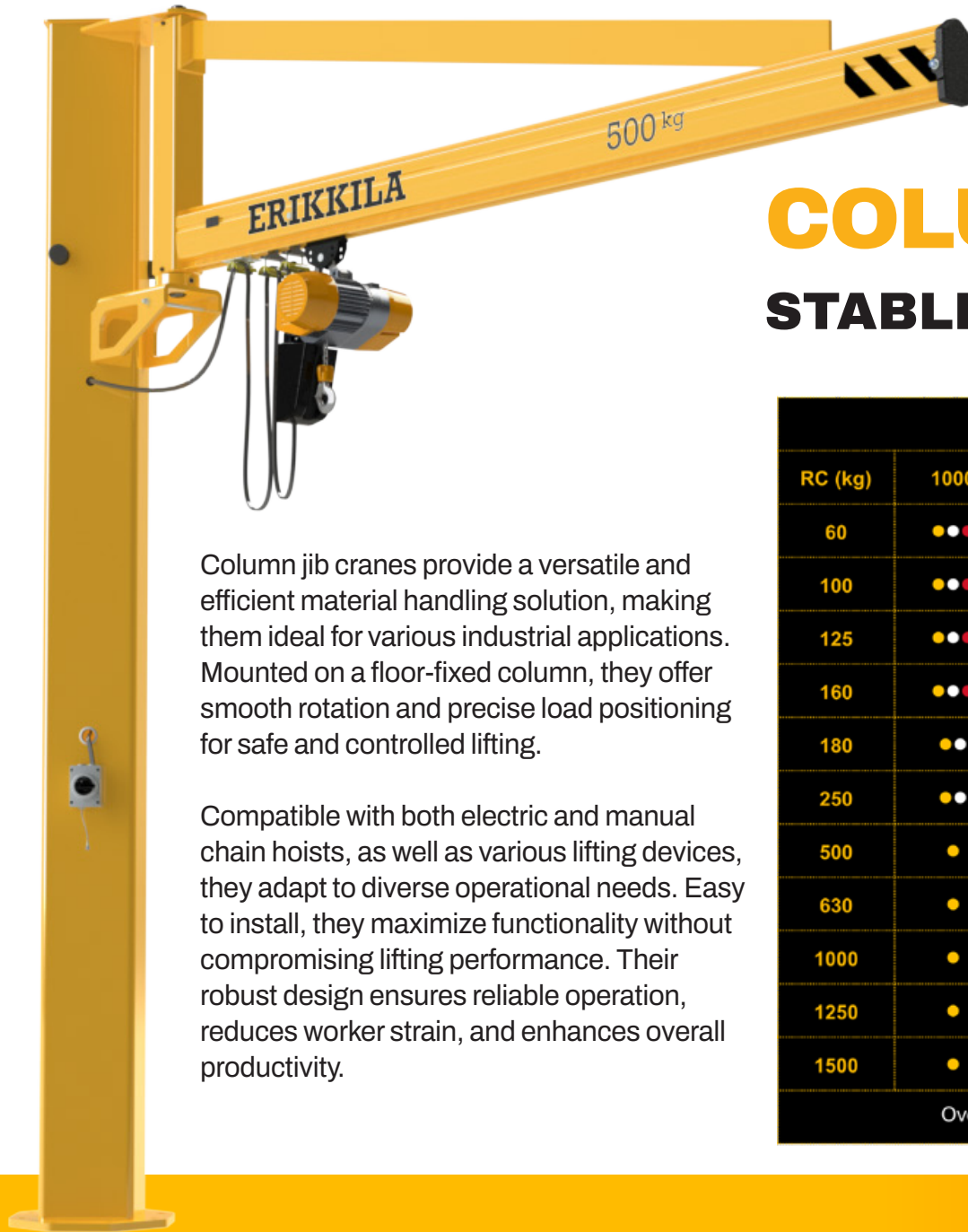
For heavier loads, a bogie girder is used for enhanced support and stability.



**INTERNAL CONDUCTOR
RAIL IS AVAILABLE FOR
PROFILES ALU 4/180, ALU
5/220, S200 AND S260**







COLUMN JIB CRANES

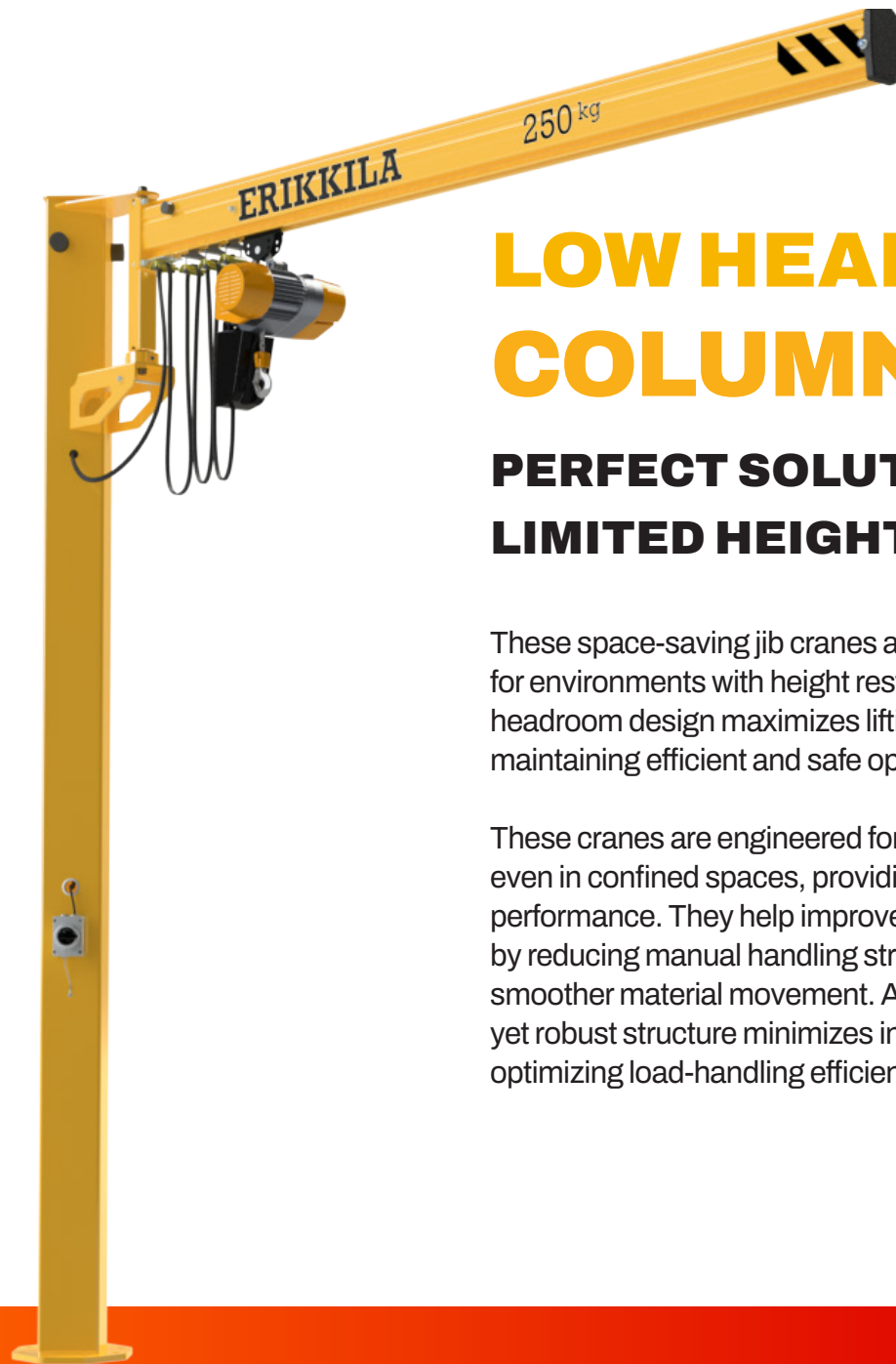
STABLE AND EASY TO OPERATE

Column jib cranes provide a versatile and efficient material handling solution, making them ideal for various industrial applications. Mounted on a floor-fixed column, they offer smooth rotation and precise load positioning for safe and controlled lifting.

Compatible with both electric and manual chain hoists, as well as various lifting devices, they adapt to diverse operational needs. Easy to install, they maximize functionality without compromising lifting performance. Their robust design ensures reliable operation, reduces worker strain, and enhances overall productivity.

RC (kg)	Reach (mm)							
	1000	2000	3000	4000	5000	6000	7000	8000
60	●●●	●●●	●●●	●●●	●●●	●	●	●
100	●●●	●●●	●●●	●●●	●●	●	●	●
125	●●●	●●●	●●●	●●	●	●	●	●
160	●●●	●●●	●●●	●	●	●	●	●
180	●●	●●	●●	●	●	●	●	●
250	●●	●●	●●	●	●	●	●	●
500	●	●	●	●	●	●	●	●
630	●	●	●	●	●	●	●	●
1000	●	●	●	●	●	●	●	●
1250	●	●	●	●	●			
1500	●	●	●	●	●			

Overbraced steel ● Low headroom steel ● Low headroom aluminium ●



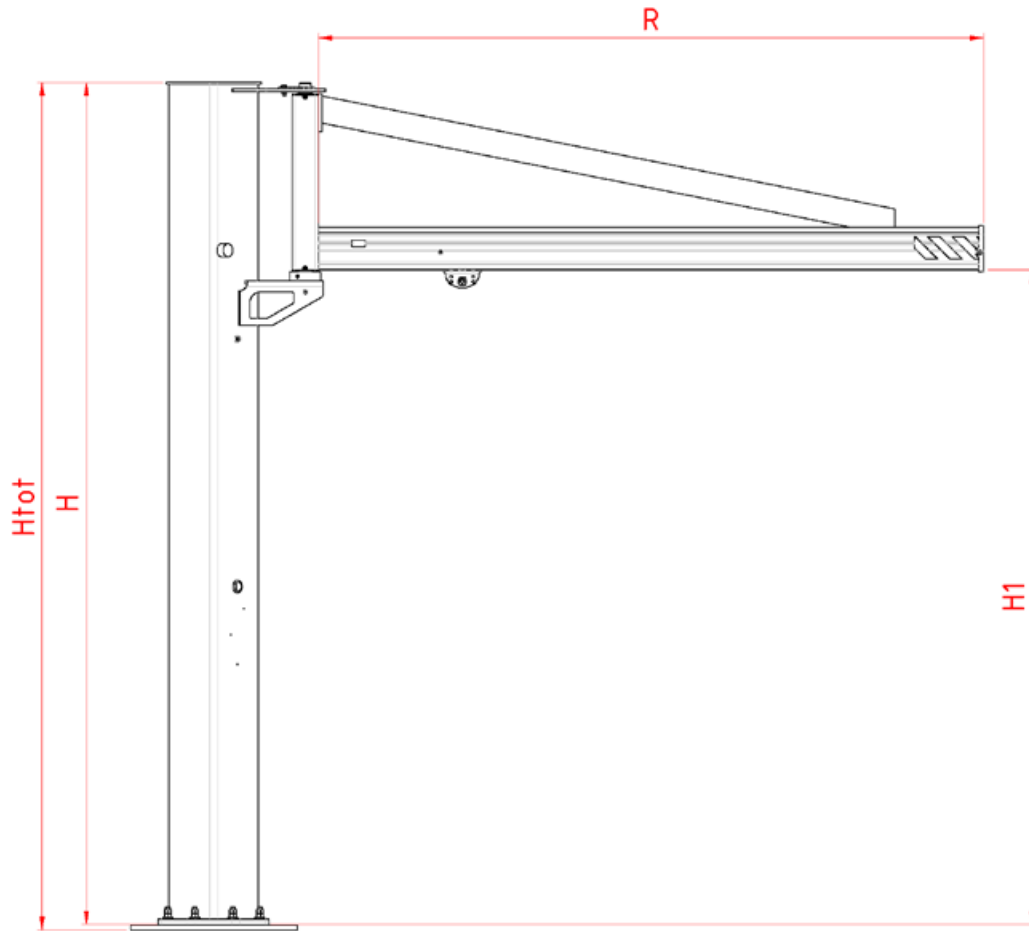
LOW HEADROOM COLUMN JIB CRANES

PERFECT SOLUTION FOR PLACES WITH LIMITED HEIGHT

These space-saving jib cranes are specifically designed for environments with height restrictions. Their low-headroom design maximizes lifting height while maintaining efficient and safe operation.

These cranes are engineered for durability and stability, even in confined spaces, providing reliable lifting performance. They help improve workplace ergonomics by reducing manual handling strain and facilitating smoother material movement. Additionally, their compact yet robust structure minimizes installation space while optimizing load-handling efficiency.

JIB CRANE DIMENSIONS



OVERBRACED STEEL JIB

Overbraced column and Wall console jibs, steel							
RC (kg)	R max. (mm)	H max. (mm)	H min. (mm)	Bearing tube	^{*)} H1 (mm)	^{*)} H1 with H max. (mm)	Profile type
100	5000	6000	3000	h500_D30	H-544	5456	S140
100	6000	6000	3000	h800_D30	H-846	5154	S140
100	8000	6000	3000	h800_D50	H-852	5148	S200
125	5000	6000	3000	h500_D30	H-544	5456	S140
125	6000	6000	3000	h800_D30	H-846	5154	S140
125	8000	6000	3000	h800_D50	H-852	5148	S200
160	4000	6000	3000	h500_D30	H-544	5456	S140
160	6000	6000	3000	h800_D30	H-846	5154	S140
160	8000	6000	3000	h800_D50	H-852	5148	S200
180	3000	6000	3000	h500_D30	H-544	5456	S140
180	5000	6000	3000	h800_D30	H-846	5154	S140
180	8000	6000	3000	h800_D50	H-852	5148	S200
250	3000	6000	3000	h500_D30	H-544	5456	S140
250	5000	6000	3000	h800_D30	H-846	5154	S140
250	8000	6000	3000	h800_D50	H-852	5148	S200
320	5000	6000	3000	h800_D50	H-852	5148	S140
320	8000	6000	3000	h800_D50	H-852	5148	S200
500	4000	6000	3000	h800_D50	H-852	5148	S140
500	6000	6000	3000	h800_D50	H-852	4948	S200
500	8000	6000	3000	h1000_D50	H-1052	5148	S260
630	5000	6000	3000	h800_D50	H-852	4948	S200
630	6000	6000	3000	h1000_D50	H-1052	4750	S260
630	8000	6000	3000	h1250_D50	H-1250	4750	S260
1000	3000	6000	3000	h800_D50	H-852	5148	S200
1000	5000	6000	3000	h1000_D50	H-1052	4948	S260
1000	6000	6000	3000	h1250_D50	H-1250	4750	S260
1250	2000	6000	3000	h800_D50	H-852	5148	S200
1250	4000	6000	3000	h1000_D50	H-1052	4948	S260
1250	5000	6000	3000	h1250_D50	H-1250	4750	S260
1500	2000	6000	3000	h800_D50	H-852	5148	S200
1500	4000	6000	3000	h1000_D50	H-1052	4948	S260
1500	5000	6000	3000	h1250_D50	H-1250	4750	S260

^{*)} Only with Column Jibs

LOW HEADROOM STEEL JIB

Low headroom column and Wall console jibs, steel							
RC (kg)	R max. (mm)	H max. (mm)	H min. (mm)	Bearing tube	¹⁾ H1 (mm)	¹⁾ H1 with H max. (mm)	Profile type
60	4000	5000	3000	h500_D30	H-209	4791	S140
60	5000	5000	3000	h500_D30	H-262	4737	S200
100	3000	5000	3000	h500_D30	H-209	4791	S140
100	4000	5000	3000	h500_D30	H-262	4737	S200
125	2000	5000	3000	h500_D30	H-209	4791	S140
125	3000	5000	3000	h500_D30	H-262	4737	S200
125	4000	5000	3000	h500_D30	H-312	4687	S260
160	2000	5000	3000	h500_D30	H-209	4791	S140
160	3000	5000	3000	h500_D30	H-288	4711	S200
180	2000	5000	3000	h500_D28	H-209	4791	S140
180	3000	5000	3000	h500_D29	H-262	4737	S200
250	1000	5000	3000	h500_D28	H-209	4791	S140
250	2000	5000	3000	h500_D29	H-288	4711	S200
250	3000	5000	3000	h500_D30	H-312	4687	S260

¹⁾ Only with Column Jibs

LOW HEADROOM ALUMINIUM JIB

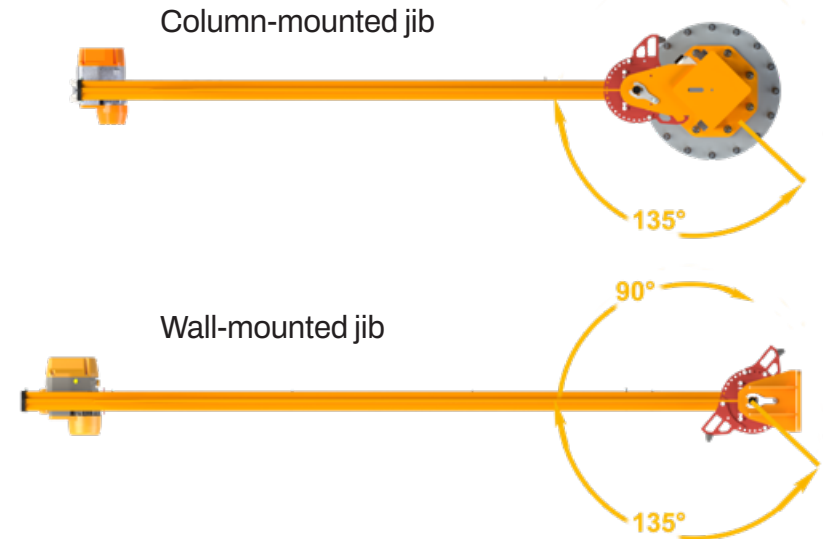
Low headroom column and Wall console jibs, aluminium							
RC (kg)	R max. (mm)	H max. (mm)	H min. (mm)	Bearing tube	¹⁾ H1 (mm)	¹⁾ H1 with H max. (mm)	Profile type
60	1000	5000	3000	h500_D30	H-176	4823	ALU2
60	2000	5000	3000	h500_D30	H-209	4790	ALU3
60	4000	5000	3000	h500_D30	H-248	4751	ALU4
60	5000	5000	3000	h500_D30	H-288	4711	ALU5
100	1000	5000	3000	h500_D30	H-176	4823	ALU2
100	2000	5000	3000	h500_D30	H-209	4790	ALU3
100	3000	5000	3000	h500_D30	H-248	4751	ALU4
100	4000	5000	3000	h500_D30	H-288	4711	ALU5
100	5000	5000	3000	h500_D30	H-288	4711	ALU5
125	1000	5000	3000	h500_D30	H-176	4823	ALU2
125	2000	5000	3000	h500_D30	H-209	4790	ALU3
125	3000	5000	3000	h500_D30	H-248	4751	ALU4
160	1000	5000	3000	h500_D30	H-209	4790	ALU3
160	2000	5000	3000	h500_D30	H-248	4751	ALU4
160	3000	5000	3000	h500_D30	H-288	4711	ALU5

¹⁾ Only with Column Jibs

SLEWING ANGLE

The slewing angle refers to the range in degrees within which the jib can rotate around the jib shaft. For wall-mounted jibs, the wall or pillar structure may limit the maximum slewing angle, even if the jib itself allows for a wider range. By default, the column-mounted jibs have a slewing angle of 270°, while wall-mounted jibs typically have 180°. However, depending on the installation, such as mounting on a narrow pillar, the angle can extend up to 270°.

An optional adjustable slewing limiter allows for angle restriction, enabling controlled movement between 130° and 0° in 5° increments.





WALL JIB CRANES

ADAPT TO DIFFERENT PRODUCTION NEEDS

Wall jib cranes offer a space-saving lifting solution for workstations positioned near walls or vertical structures. Installed at the required height, they provide a wide reach and broad turning angle, allowing seamless operation beneath an overhead crane if needed.

Compatible with both electric and manual chain hoists, as well as various lifting devices, they enhance efficiency and flexibility in material handling.

RC (kg)	Reach (mm)							
	1000	2000	3000	4000	5000	6000	7000	8000
60	●●●	●●●	●●●	●●●	●●●	●	●	●
100	●●●	●●●	●●●	●●●	●●	●	●	●
125	●●●	●●●	●●●	●●	●	●	●	●
160	●●●	●●●	●●●	●	●	●	●	●
180	●●	●●	●●	●	●	●	●	●
250	●●	●●	●●	●	●	●	●	●
500	●	●	●	●	●	●	●	●
630	●	●	●	●	●	●	●	●
1000	●	●	●	●	●	●	●	●
1250	●	●	●	●	●			
1500	●	●	●	●	●			

Overbraced steel ● Low headroom steel ● Low headroom aluminium ●



LOW HEADROOM WALL JIB CRANES

EFFORTLESS OPERATION IN LOW-CLEARANCE SPACES.

Engineered for environments with limited height, this space-saving solution enhances ergonomics while maximizing productivity. Designed for durability and stability, it ensures safe and efficient lifting in confined spaces.

Compatible with both electric and manual chain hoists, as well as various lifting devices, it offers quick and easy installation, delivering optimal functionality without compromising lifting performance.

FEATURES AND OPTIONS

RUBBER BUFFER

- Reduces impact when the profile reaches end positions with excessive force.
- Enables quick and easy installation and removal for added convenience.



PLASTIC END PLATE

- Quick and easy installation and removal for convenience.
- End bolt protection prevents damage by absorbing trolley impact.
- Simplifies on-site profile cutting, allowing for greater flexibility.



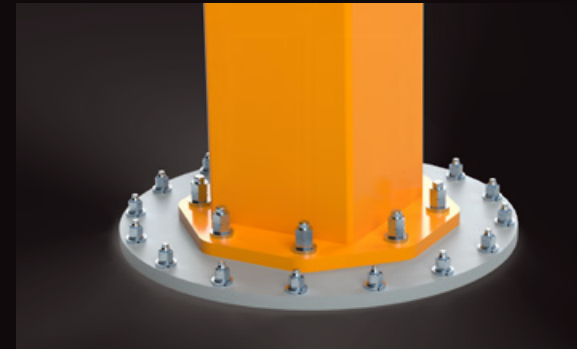
UNIVERSAL SLEWING LIMITING DEVICE

- Compatible with all Mk2 column and wall jib cranes, with only bolt kits varying.
- Adjustable positioning allows precise slewing angle control, preventing collisions with walls or obstacles.



SEPARATE INSTALLATION PLATE

- A larger plate enables jib crane installation on thinner or weaker floors.
- Using a separate plate cuts costs and reduces transport expenses when sourced locally.
- Plate diameters range from 500–1500 mm, with a minimum size of 400x400 mm.
- Thickness varies between 20–35 mm.



ADJUSTABLE SHAFT BEARING

- Ensures a perfectly horizontal jib profile with an adjustable bearing.
- Eliminates or reduces the need for manual shimming.
- Speeds up the alignment process while improving precision and ease.





ERIKKILA 1000kg

Kivo 1

KAAPULIITE



SUSTAINABILITY

Our key priority, alongside our customers and partners, is to create more sustainable lifting and material flow solutions. We are committed to reducing waste—whether in resources, energy, or time—by optimizing both our manufacturing processes and product designs.

ERIKKILA



ERIKKILA OY

Masalantie 225

02430 Masala, Finland

Tel. +358 9 2219 050

sales.erikkila@kitocrosby.com

www.erikkila.com

 **KITO CROSBY™**



© ERIKKILA OY

ERIKKILA OY reserves the right to modify product specifications, make changes, or discontinue products at any time.

DOC02000301KE - 251006